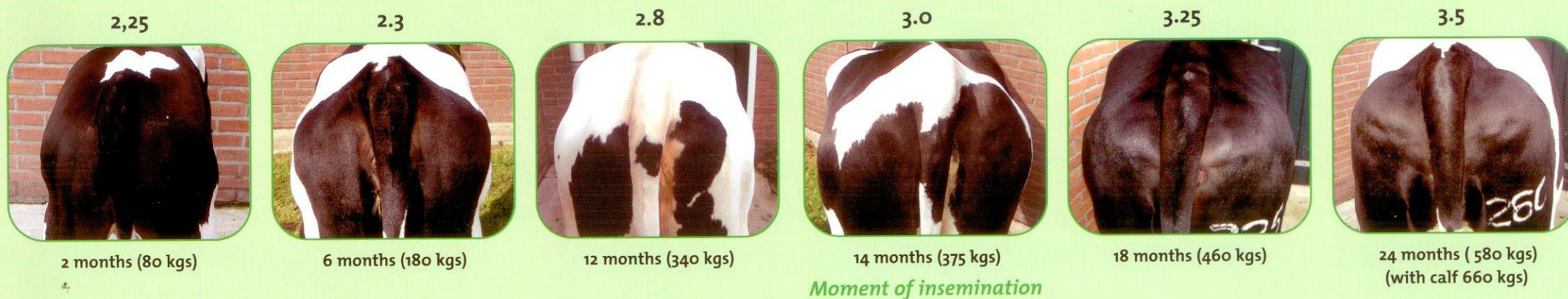


Condition score calves/heifers of different ages



OPTIMAL GROWTH

In this diagram the desired weights refer to cows that have an adult weight of 680 kgs and of 580 kgs after the first calving.

Table Optimal Growth

	% of adult weight	live weight kgs	heart girth	rump height	average growth per day in grammes
Birth weight	6%	41			
Weaning weight	12%	82	101		550-600
Age 6 months	26,5%	180	129	108	700-800
Age 12 months	50%	340	161	126	800-850
Insemination at	55-60 %	375-408	168-174	130-133	675-725
Age 18 months	68%	460	182	135	600-650
After calving	85%	580	197	144	
Adult cow	100%	680	212		

FEEDING

It is essential that the animal develops optimally. It is necessary to follow the next feeding recommendations:

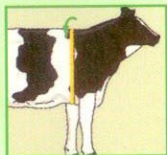
- Feeding colostrum is a must
- After three days milkreplacer (10 % of body weight)
- After day 4 fresh water available
- Tasteful and soft concentrates.
- Weaning at 12 % adult weight.
- Broken maize corn + grain stimulates the rumen papilla.
- Enough concentrates with a high amount of protein till the moment of insemination
- Be aware of **over-conditioned** animals in the second year growth period.

Table Average Feeding Requirement

Weight	DM-intake roughage	Kg concentrate	FUM	MJ	TDN	CP
100	1,5	1,75	2900	20,1	2210	17 – 18
150	2,9	1,0	3400	23,6	2600	16 – 17
200	4,6	0,5	4100	28,4	3130	16 – 17
250	5,2	0,5	4800	33,3	3660	15 – 16
300	6,1	0	5200	36,1	3970	15 – 16
350	7,0	0	5700	39,6	4350	15 – 16
400	7,3	0,5	6400	44,4	4890	14 – 15
450	7,7	1,0	7100	48,6	5340	14 – 15
500	8,4	1	7700	53,5	5880	14 – 15

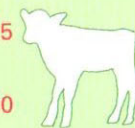
Till 10 months (300 kgs live weight) the quality of the roughage should be: 850 FUM (5,9MJ/650TDN)
After 10 months " " " " : 800 FUM (5,6 MJ/610TDN)

Heifer Growth Chart

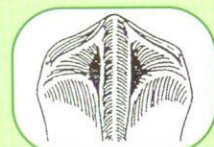
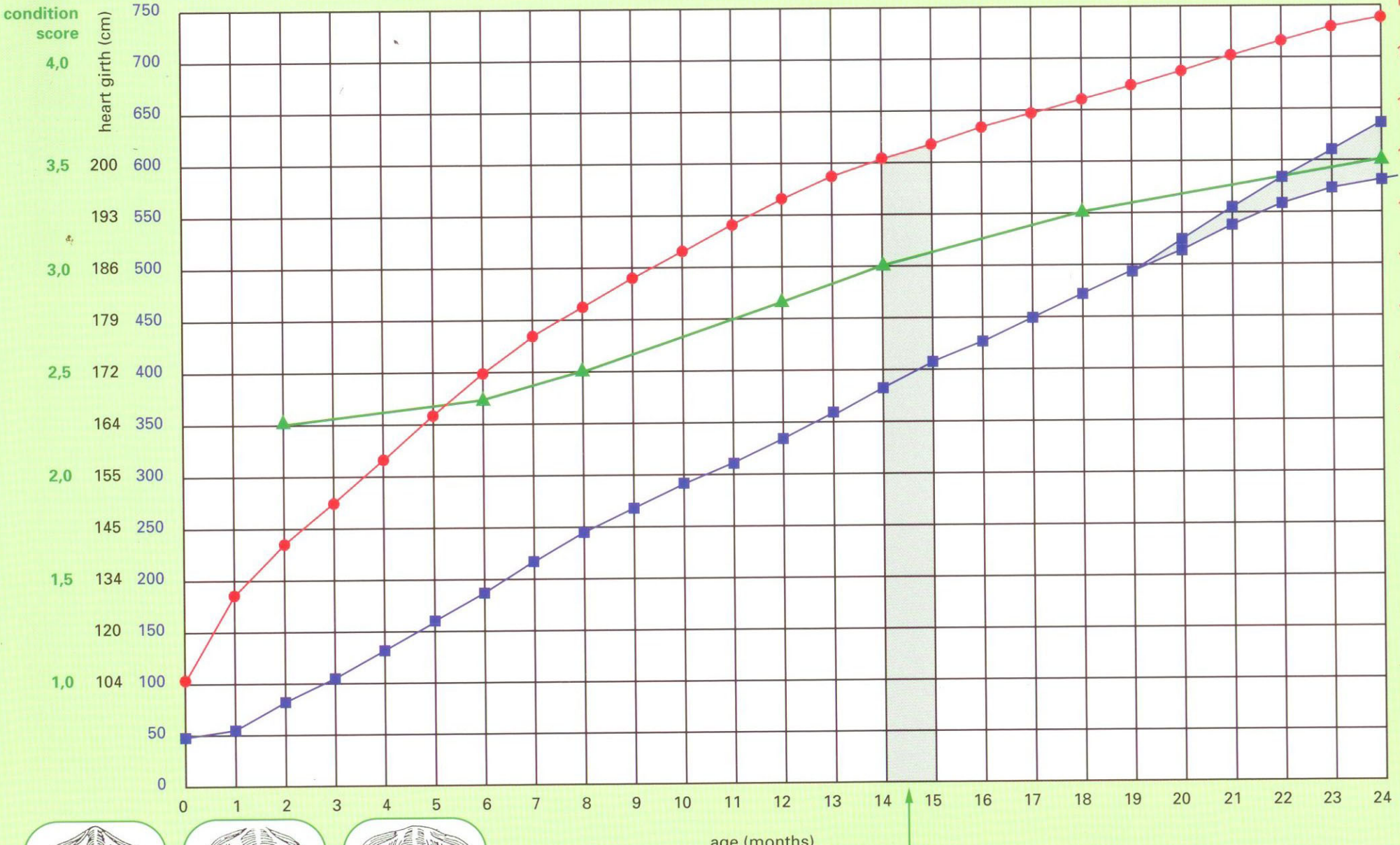


live body weight (kgs)

Body Condition Score live body weight (kgs) height (cm)



condition score



2



3



4

Moment of insemination



VEEPRO HOLLAND

Information centre for Dutch cattle